



Environmental Scan
Arts Education Survey for the eight
counties of Western New York 2010-2011
Arts Partners for Learning

Survey Introduction

The survey provides a baseline snapshot of arts education programming provided by culturals in the eight counties of Western New York.

Analysis of the data will provide us with information regarding what gaps in services there are so that we may set goals based on the needs of the region.

We anticipate this study and future studies will assist in providing a potential resource for advocacy and funding efforts.



64 cultural organizations participated in sharing data from 439 programs in 2010-2011 school year's program.

Collectively 163,078 children are served by arts education programs, as reported by the cultural organizations listed below.

Because most of the large cultural organizations submitted data, we can see this as a reasonably accurate representation of the majority of programs offered.

Programs surveyed summary:

- 53.3% are in-school programs
- 12.1% are after school programs
- 41.7% are out of school programs
- 51.2% serve children Pre-K – grade 2
- 71.7% serve children grades 3-5
- 41% serve children grades 6-8
- 28.3% serve children grades 9-12
- 18.2% are music programs
- 5.5% are dance programs
- 11.6% are theater programs
- 32.8% are visual arts programs
- 11.8% are literature programs
- 4.8% are media programs
- 17.3% are multi-arts programs in areas such as architecture, ceramics, history, puppetry, with others having a focus in a predominant art form of dance, music, theater, and visual arts.

A Summary of the Process

- We had a 24% response rate with a 20% rate of response anticipated based on best practices. This was a successful survey response rate.
- Data showed 439 programs offered by 65 cultural organizations in the WNY area.
- We received data from organizations located in 7 of the eight counties.
 - Approximately 165,078 children served by reported programs
 - Approximately 757,197 total children are served by total programming, not necessarily educational, in general by respondents

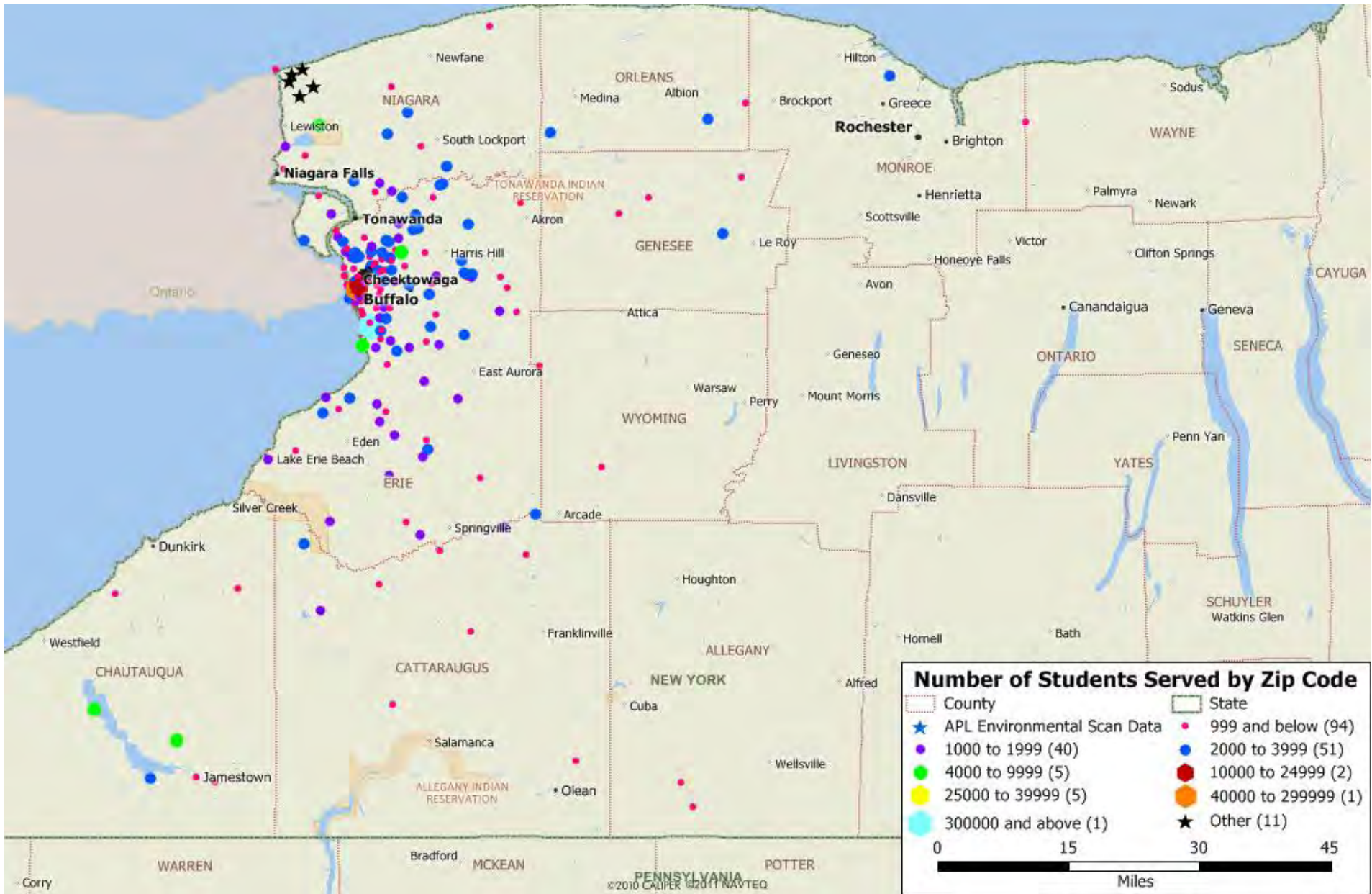
In other words, in addition to arts education programs, these institutions provide significant programs that enjoy attendance by children and families.

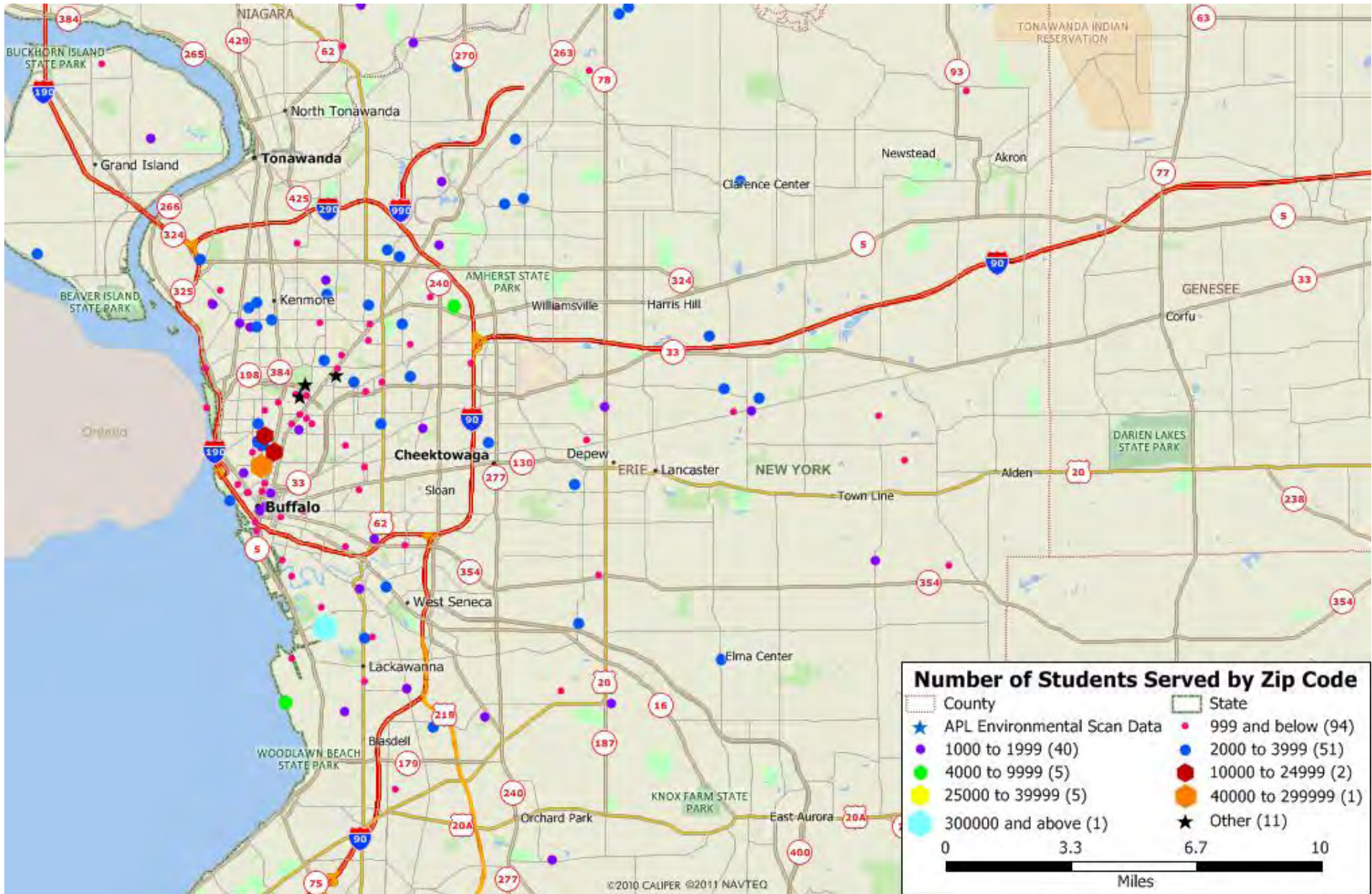
What comes next?

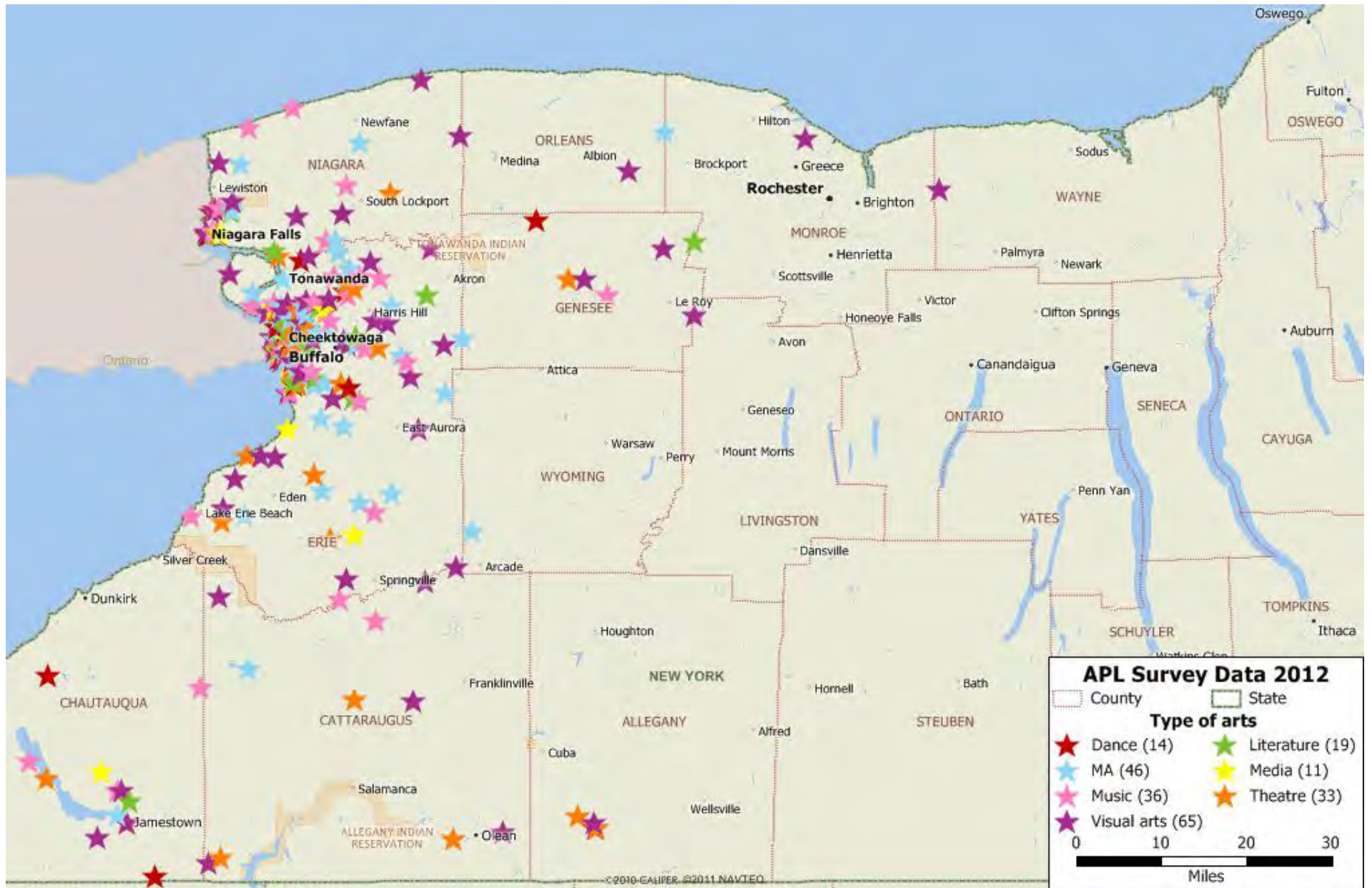
- Use the data to set goals in order to serve the needs of the region for expanded arts education.
- Use what we have learned through this surveys to inform implementation of future surveys to document increases or decreases in programs served.
- Report out to the public.

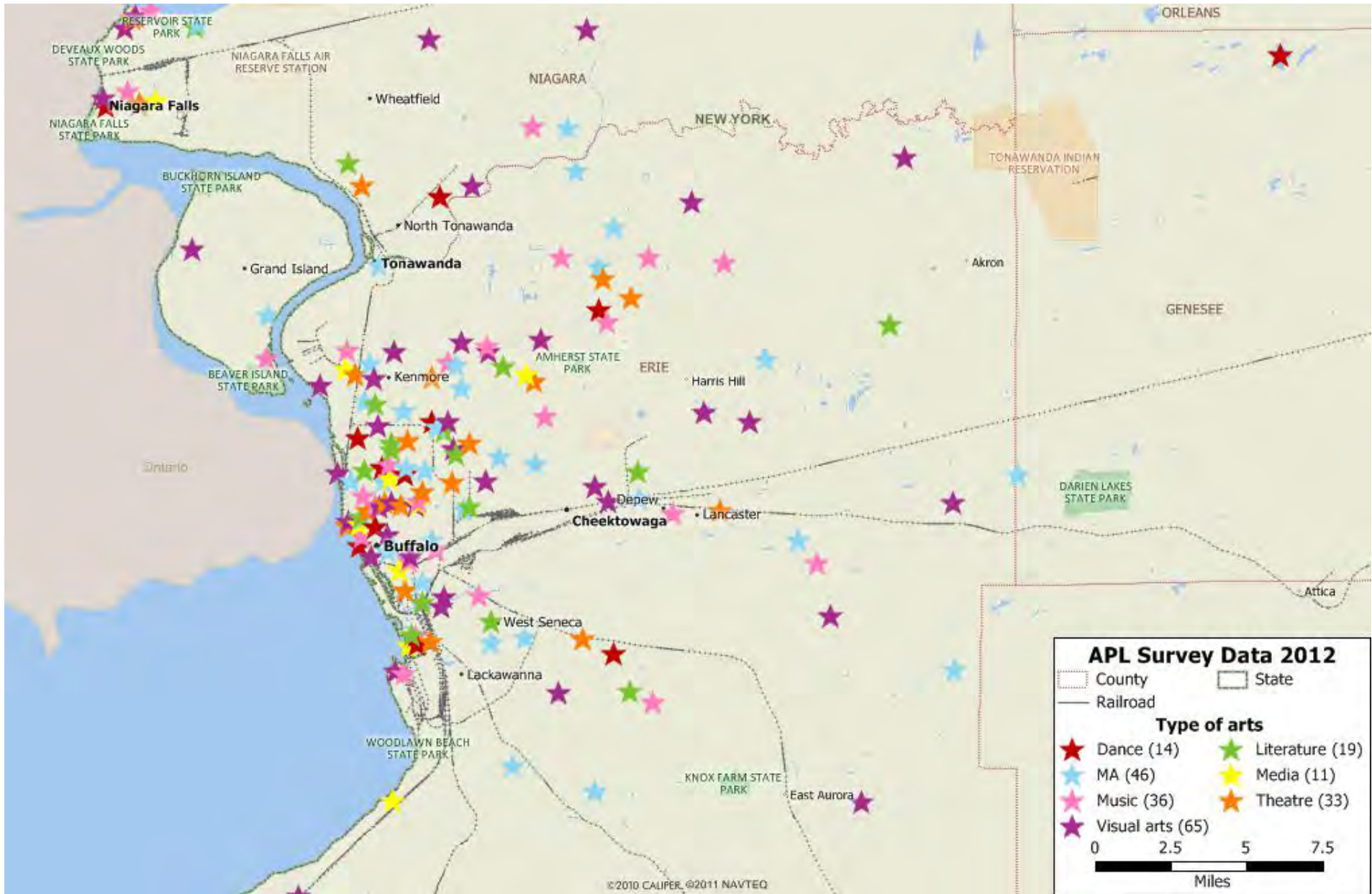
Maps of the data and zip code listing follow

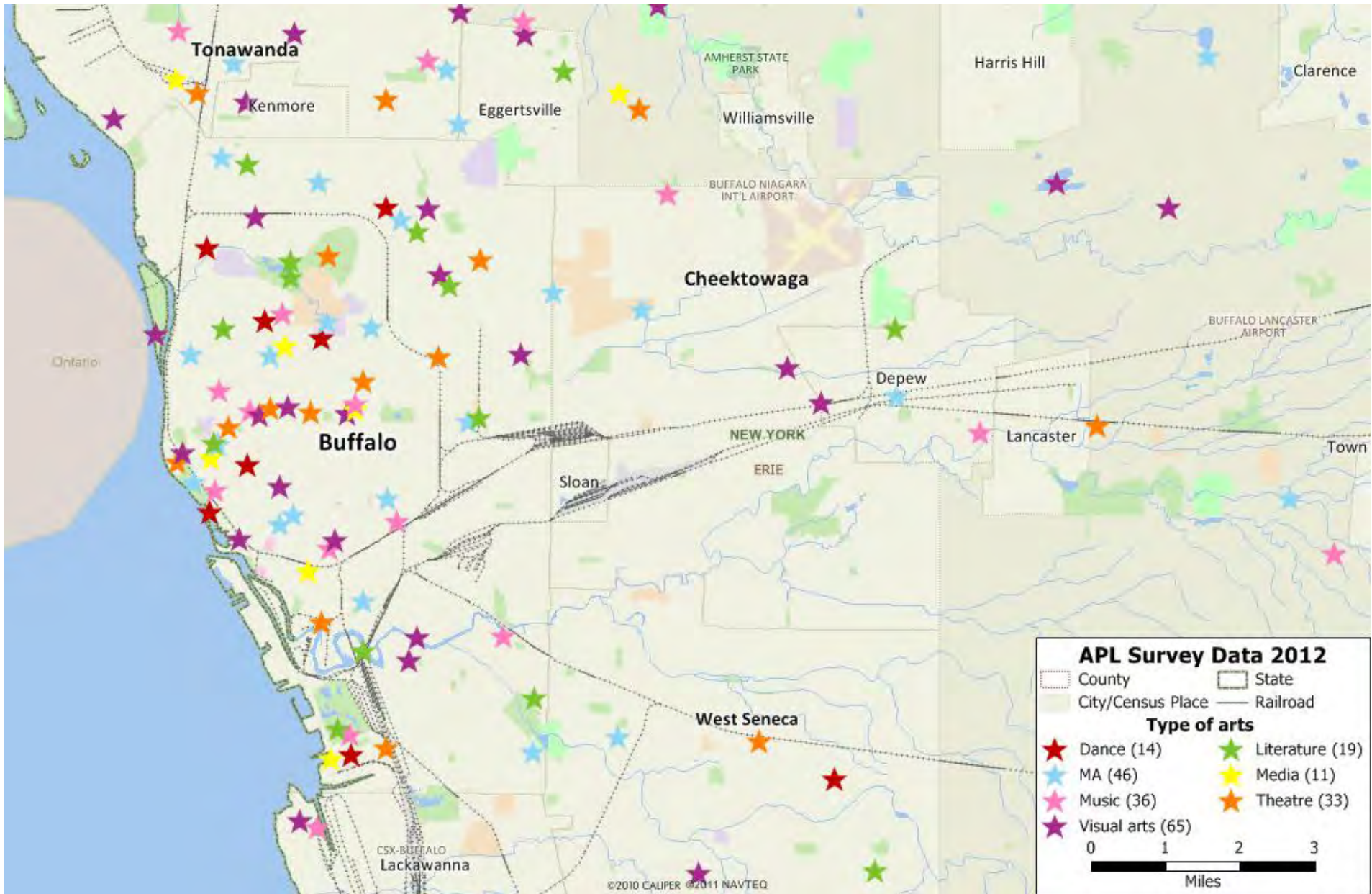












The following cultural organizations have participated in this environmental scan.

Albright-Knox Art Gallery	Fenton History Center
Amherst Players, Inc.	Graycliff
Artpark and Company	Hallwalls Contemporary Arts Center
Arts Council For Chautauqua County	Irish Classical Theatre Company
Buffalo and Erie County Botanical Gardens Society	Just Buffalo Literary Center
Buffalo and Erie County Historical Society	Latin America Cultural Association
Buffalo and Erie County Public Library	Lehrer Dance
Buffalo Arts Commission	Lewiston Council of the Arts
Buffalo Arts Studio	Locust Street Neighborhood Art Classes
Buffalo Olmsted Parks Conservancy	Darwin Martin House Restoration
Buffalo Chamber Music Society	Millard Fillmore House Museum
Buffalo Music Hall of Fame	Museum of disABILITY History
Buffalo Philharmonic Orchestra	Neglia Ballet Artists
Buffalo Public Schools Foundation	Neglia Ballet Artists & Conservatory
Buffalo Religious Arts Center	Neto Hatinakew Onkwehowe
Buffalo Zoological Gardens	Niagara Arts & Cultural Center
Burchfield Penney Art Center	North Tonawanda History Museum
Caledonian Pipes & Drums of Buffalo, NY	Old Fort Niagara
Carousel Society of the Niagara Frontier	Penn Dixie Paleontological Education Center
Castellani Art Museum of Niagara University	Road Less Traveled Productions
Cattaraugus County Arts Council	Shea's Performing Arts Center
Chautauqua Institution	Squeaky Wheel
Community Music School	The New Phoenix Theatre On The Park
Dunkirk Historical Society	Theatre of Youth Company, Inc. (TOY)
Erie County Agricultural Society	Theodore Roosevelt Inaugural National Historic Site
Explore & More Children's Museum	University at Buffalo Art Galleries

Statistics from the Survey Data

(Please note the data is a reflection of the 439 programs provided by the 64 cultural organizations that participated in the survey and is not comprehensive of every cultural institution in Western New York)

School District	Zip Code	Number of Programs	Art Form	School District	Zip Code	Number of Programs	Art Form	School District	Zip Code	Number of Programs	Art Form
Akron	14001	1	Visual arts	West Valley	14171	1	Music	Kenmore-Tonawanda Union Free	14217	5	Visual arts
		1	Literature	Wilson Central	14172	1	Music			5	MA
Alden	14004	1	Visual arts	Yorkshire-Pioneer	14173	5	Visual arts	Lackawanna City	14218	3	Visual arts
		1	MA	Lewiston-Porter Central	14174	1	Visual arts	Lackawanna City	14218	3	Music
Angola/Lakeshore	14006	1	Theatre			1	Music	Lackawanna City/ Frontier	14219	1	MA
		1	Visual arts			5	MA	Buffalo City Schools	14220	2	Visual arts
		1	Music	Buffalo City Schools	14201	2	Theatre			1	Literature
		2	MA	Buffalo City Schools	14210	3	Visual arts			2	MA
Pioneer	14009	1	MA			2	Literature	Williamsville Central	14221	3	Theatre
Barker	14012	1	Visual arts			2	Media	Williamsville Central	14221	29	Visual arts
Batavia	14020	1	Theatre			10	Music			3	Music
		1	Visual arts			1	Dance			1	Dance
		1	Music			10	MA			4	MA
Eden Central/Springville/Hamburg Central	14025	2	Music	Buffalo Public Schools	14202	2	Theatre	Buffalo Public Schools	14222	3	Theatre
		1	MA			8	Visual arts			10	Visual arts
Clarence	14031	5	Visual arts			2	Dance	Greece Central	14612	1	Visual arts
		1	MA			1	MA	Southwestern	14701	6	Theatre

School District	Zip Code	Number of Programs	Art Form	School District	Zip Code	Number of Programs	Art Form	School District	Zip Code	Number of Programs	Art Form
Clarence Central	14032	1	Music	Buffalo City Schools	14203	2	Theatre	Southwestern	14701	15	Visual arts
Yorkshire-Pioneer	14042	1	Visual arts			15	Visual arts			3	Literature
		17	Visual arts			9	Literature	Kenmore-Tonawanda Union Free	14223	2	Theatre
		1	Literature			1	Media			4	Visual arts
		1	Music			2	Music			1	Music
Delevan	14043	3	MA			2	Dance			5	MA
Evans-Brant Central	14047	1	Visual arts			1	MA	West Seneca	14224	1	Theatre
Williamsville Central	14051	1	Theatre	Buffalo City Schools	14204	3	Theatre			9	Visual arts
		18	Visual arts			8	Visual arts			1	Literature
		2	Music			2	Media			5	Music
		2	MA			2	Music			1	Dance
East Aurora Central. Free	14052	1	Visual arts			2	MA			1	MA
		1	MA	Cheektowaga-Sloan Union Free	14206	1	Music	Cheektowaga	14225	3	Visual arts
Iroquois Central	14059	3	Visual arts	Buffalo City Schools	14207	1	Theatre			1	Music
Williamsville Central	14068	1	Music			2	Visual arts			1	MA
Grand Island Central	14072	1	Visual arts			1	Literature	Amherst Central	14226	7	Theatre
		1	Music			1	Media			18	Visual arts
		3	MA	Buffalo City Schools	14207	1	Dance			4	Literature
Hamburg Central	14075	3	Theatre			1	MA			3	Media
		7	Visual arts	Buffalo City Schools	14208	2	Theatre			1	Music
		1	Media			4	Visual arts			7	MA

School District	Zip Code	Number of Programs	Art Form	School District	Zip Code	Number of Programs	Art Form	School District	Zip Code	Number of Programs	Art Form
Hamburg Central	14705	4	MA	Buffalo City Schools	14208	1	Media	Sweet Home Central	14228	1	MA
		6	Visual arts			1	Music	Niagara Falls City	14301	2	Theatre
		2	Literature			1	MA			3	Visual arts
Holland Central	14080	1	MA	Buffalo City Schools	14209	1	Theatre			1	Media
Frontier Central	14085	1	Theatre			2	Visual arts	Niagara Falls City	14301	1	Music
		1	Visual arts			1	Literature			1	Dance
Lancaster Central	14086	1	Theatre			3	Music			1	MA
		20	Visual arts			2	Dance	Niagara-Wheatfield	14304	3	MA
		1	Music			1	MA	Niagara Falls City	14305	2	Visual arts
		7	MA			1	Media			1	Literature
Lewiston-Porter Central	14092	5	Visual arts			4	Music			1	Music
Lockport City	14094	1	Theatre			1	Dance	Byron-Bergen	14416	1	Visual arts
		2	Visual arts			7	MA			1	Literature
		3	Music			2	Music	Holley Central	14470	1	Visual arts
		4	MA			1	MA			1	MA
Royalton-Hartland	14105	1	Visual arts	Buffalo City Schools	14211	1	Theatre	Le Roy	14482	1	Visual arts
Lewiston-Porter Central	14109	1	Theatre			11	Visual arts	Gananda	14502	1	Visual arts
		4	Visual arts			4	Literature			3	Media
North Tonawanda	14120	4	Theatre			4	MA			4	Music
		14	Visual arts	Cheektowaga-Sloan	14212	1	MA			4	Dance
		1	Literature	Buffalo City Schools	14213	3	Visual arts			1	MA

School District	Zip Code	Number of Programs	Art Form	School District	Zip Code	Number of Programs	Art Form	School District	Zip Code	Number of Programs	Art Form
North Tonawanda	14120	3	Music	Buffalo City Schools	14213	1	Literature	Jamestown City	14702	1	Theatre
		1	Dance			1	Music			1	Visual arts
		4	MA			2	MA	Bolivar-Richburg Central	14715	1	Theatre
Oakfield-Alabama	14125	1	Dance	Buffalo City Schools	14214	1	Theatre			1	Visual arts
Orchard Park Central	14127	2	MA			10	Visual arts	Brocton	14716	1	Dance
Gowanda Central	14129	15	Visual arts			1	Literature	Cattaraugus-Little Valley	14719	1	MA
Niagara-Wheatfield	14132	15	Visual arts			1	Dance	Chautauqua Lake	14722	3	Music
Pine Valley	14138	1	Music			5	MA	Ellicottville	14731	1	Theatre
Pine Valley	14138	2	Theatre	Cleveland Hill Union Free	14215	1	Theatre			1	Visual arts
		3	Visual arts			9	Visual arts	Frewsburg Central	14738	1	Theatre
Springville-Griffith	14141	1	Media			3	Literature			1	Visual arts
		2	Music			1	MA	Southwestern	14750	1	Visual arts
Tonawanda	14150	6	Visual arts	Buffalo City Schools	14216	9	Visual arts	Olean City	14760	1	Theatre
		5	Music			3	Literature			1	Visual arts
		4	MA			3	MA	Bolivar-Richburg Central	14774	1	Theatre
										1	Visual arts
								Horseheads Central	14872	5	Visual arts